



---

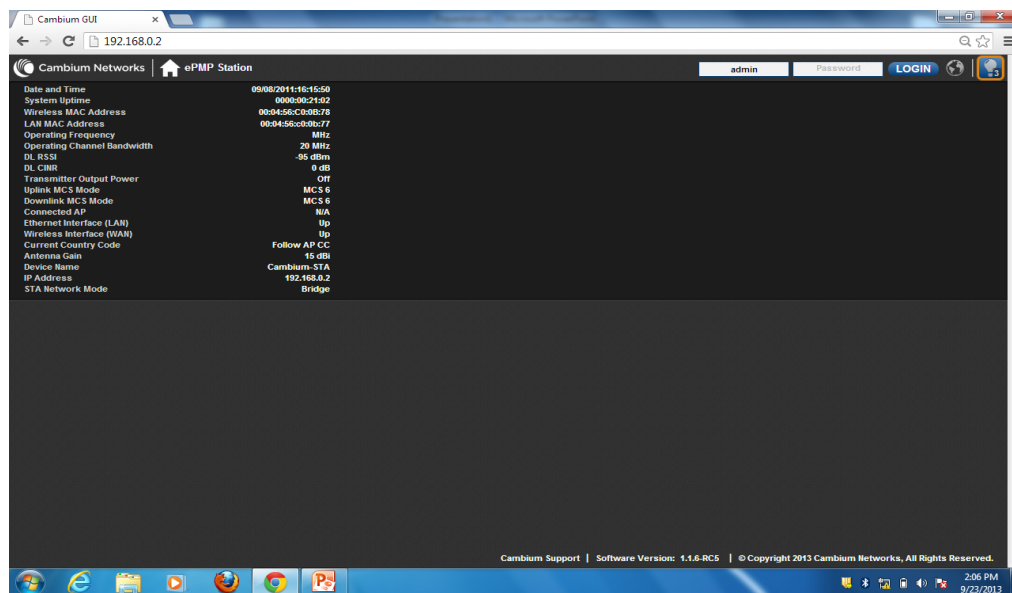
# Scanning and Registering with an AP

This guide provides instructions on how to initiate scanning and registration between ePMP Stations and Access Points.

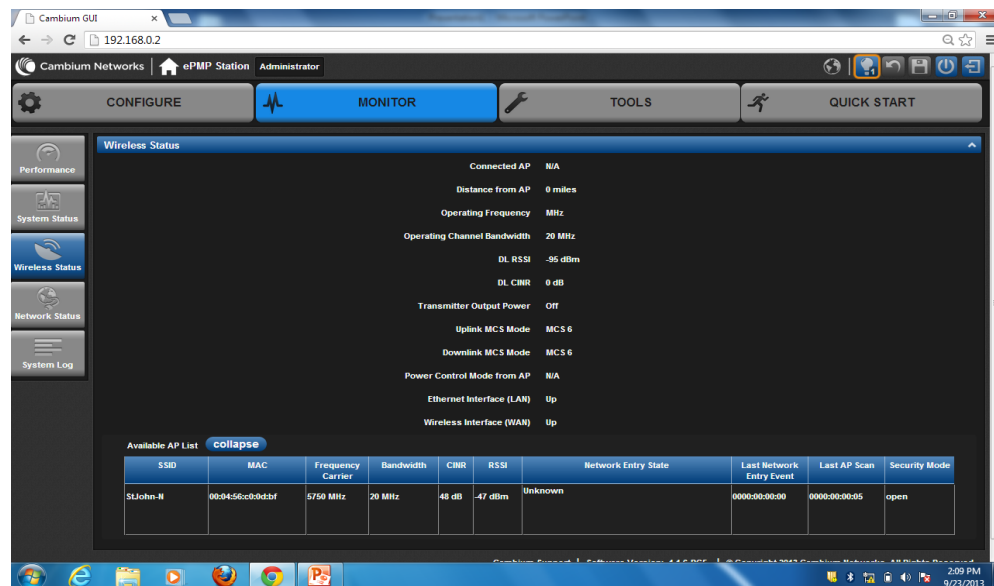
## Scanning and Registering to an AP

ePMP stations are preconfigured from the factory to initiate scanning of all supported frequencies for 20MHz channel bandwidth right after initialization of the device is complete. The most obvious visual indication that an ePMP station has started the scanning procedure is the sequential flashing of the RF LEDs. As results from the scanning procedure are available, the ePMP station will display those results in the ePMP GUI. To have access to those results, follow the steps below:

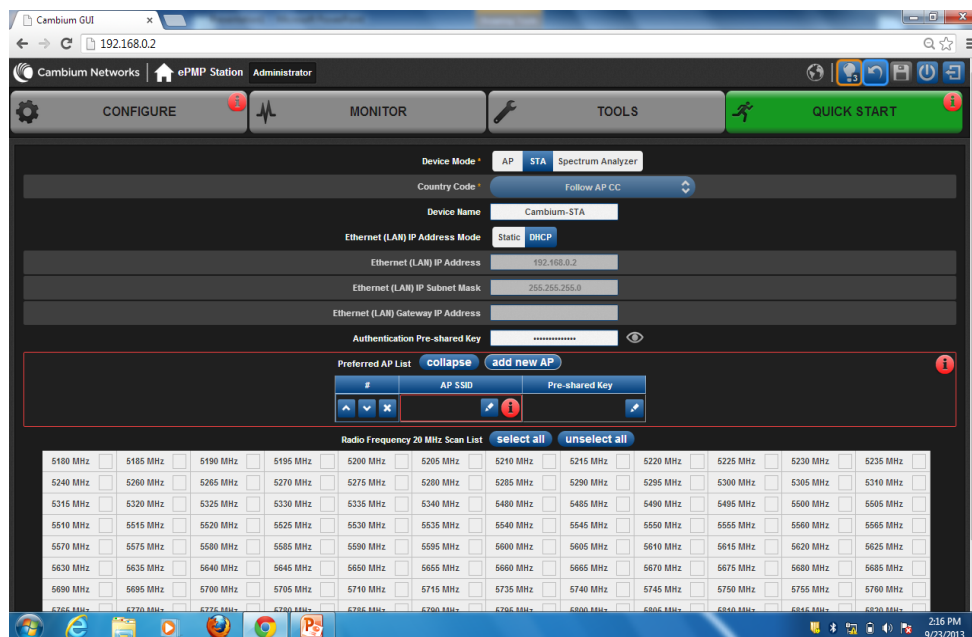
1. Start your web browser on a computer connected to the ePMP station and connect to the its default ip address (192.168.0.2). Login to the ePMP GUI as “Admin”.



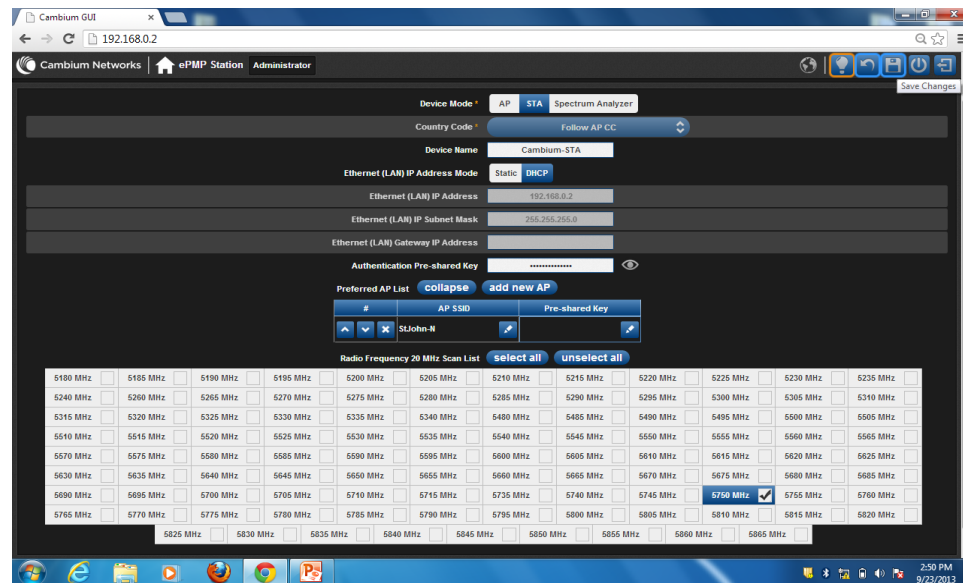
2. Once logged in, select “MONITOR” button and go to the “Wireless Status” section of that page. At the bottom of that page, the “Available AP List” table will contain a listing of all the APs that the ePMP station was able to detect during the scanning process. For each AP, the table includes relevant information such as AP SSID, channel frequency, received signal strength and security mode, to assist in the process of selecting an AP for this station.



- Once the desired AP has been selected from this list, proceed with the configuration of the ePMP station by selecting the "QUICK START" button.
- The "QUICK START" page contains the basic configuration parameters needed to allow an ePMP station to connect to an AP, all in one place. Using the information learned from the desired AP, add the AP to the "Preferred AP List" table by selecting "Add new AP". Selecting the "Edit" icon will allow adding the SSID and the pre-shared key (required if security mode not open for the AP) for the desired AP.



5. Optionally, the channel frequencies to be scanned can also be selected on this page. Selecting a subset of channel frequencies will enable the scanning process to be performed only for those selected channels, making it quicker.
6. Once configuration changes have been completed, select the “Save Changes” button to make these changes part of the configuration of the ePMP station.



7. At this point, the ePMP radio should be ready to connect to the desired AP. To verify the status of the ePMP station, select “MONITOR” button and go to the “Wireless Status” section of that page. At the top of that page, the “Connected AP” field should reflect the status of the ePMP station by displaying the SSID of the desired AP.

